

RDPE 2007 – 2013

Maximising Rural Regeneration through RDPE : Business Support



www.emda.org.uk/rdpe

delivered by



RDPE - regional strategic overview (East Midlands)

- Regional Implementation Plan sets out delivery approach and priorities for each region
- Drawn up through stakeholder consultation
- Regional Consultation Group 3x year
- Includes Local Authority representation
- Chaired & hosted by EMRAF
- Reports on EMRAF website

Business support through RDPE 2007-13

- Focus on RDPE Axes 1 & 3
- Part of the 'Solutions for Business' portfolio of government-funded business support products
- Signposting and advice through Business Link
- Delivered by emda & LAGs in the East Midlands
- Direct grants to businesses

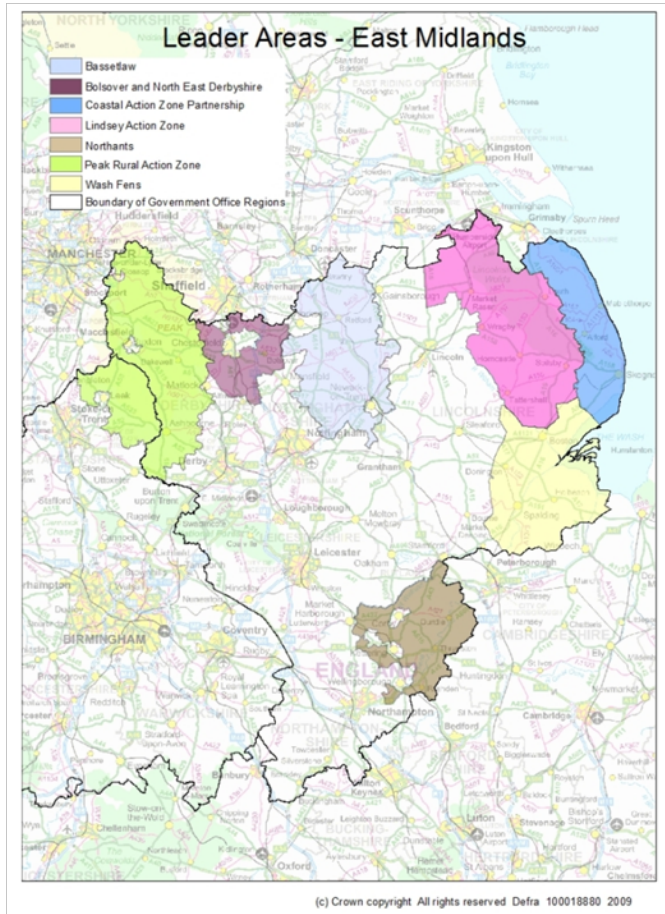
RDPE East Midlands 'themes':

- Diversification
- Renewable energy
- Adding value to products
- Co-operation (in developing new products, processes, technologies)
- Water resource management
- Vocational training & skills
- Forestry micro-enterprise grant
- Rural broadband
- Leader approach

RDPE Leader approach - East Midlands

- Diversification
- Creation & development of micro-enterprises
- Tourism
- Rural heritage & culture
- Training & information
- Approx £13 million 2008-13
- 7 LAGs

RDPE Leader Approach – East Midlands



- Lincolnshire Wolds
- Lincolnshire Coast
- Lincolnshire Wash Fens
- Bolsover & NE Derbyshire
- Peak District
- North Northamptonshire
- Bassetlaw, Newark & Sherwood (N Notts)

Wider considerations

- Business support can be ‘anything that can help my business’
- Includes mutual understanding, positive engagement, consistent relationships
- Contribution of land-based sectors to local economy, environment and communities

delivered by



Key roles and functions for Local Authorities

- Recognise the needs, priorities and perspectives of farm and land-based businesses
- Integrate within economic development strategy and activity
- Ensure LEPs include rural areas and interests
- Link to wider agendas – water, energy, waste; education & skills; food, health, housing, care; tourism, leisure, environment & heritage.

delivered by



Key roles and functions for local authorities (2)

- Awareness of specific criteria and limitations of RDPE (eligibility, regulations, audit, etc...)
- Effective signposting & advice
- Supportive approach to planning applications and consents
- Leader approach – vital role: local engagement, accountable body, partner, employer, etc

delivered by



The future.....

- Transition in mid programme has serious risks - loss of continuity and focus
- Maximum impact and cost-effectiveness (& minimum risk) through economies of scale
- RDPE as a means to address strategic national priorities (food, water, energy, etc...)
- Delivery must continue with as little disruption as possible

The future.....(2)

- No clarity yet on LEPs or Business Link
- Ensure LEPs include rural areas and interests
- Engage with development of successor programme

Thank you

Melanie Fischer
Rural Policy Manager, *emda*

melanief@emd.org.uk

0115 9888 300