



# Kate Forrest

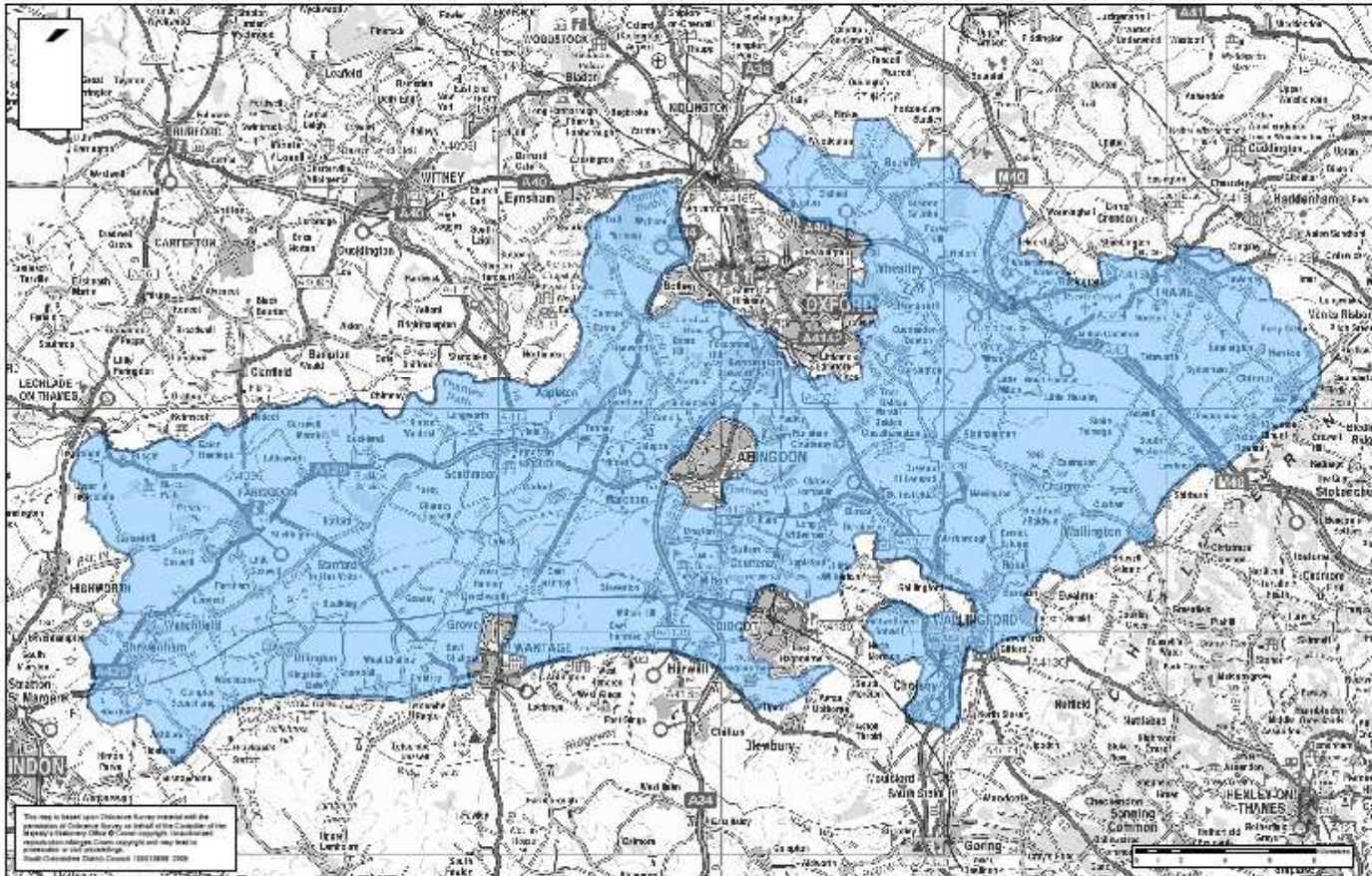
## Southern Oxfordshire LEADER

[www.southernoxfordshireleader.org.uk](http://www.southernoxfordshireleader.org.uk)

# What is LEADER?

- ◆ 'Liaisons Entre Actions de Développement de L'Économie Rurale' or 'Links Between Actions for the Development of the Rural Economy'.
- ◆ Part of the Rural Development Programme for England 2007-2013
- ◆ Common Agricultural Policy (CAP) Modulation – a more diverse, sustainable rural economy
- ◆ The Southern Oxfordshire LEADER  
North Wessex Downs LEADER  
Chilterns LEADER

# The LAG Area



Southern Oxfordshire Leader Bid

# Strategic Themes

- ◆ Encouraging enterprise and business innovation.
  - ◆ Improving tourism in rural locations and enhancing heritage and landscape.
  - ◆ Addressing social exclusion.
  - ◆ Skills development for rural areas.
  - ◆ Addressing climate change is a cross cutting theme.
- 
- A stylized silhouette of a mountain range in shades of teal, located at the bottom right of the slide.

# The Local Action Group

## **Who are the Southern Oxfordshire Local Action Group?**

- ◆ The Local Action Group (LAG) is a 'multi-sector' partnership who oversee the delivery of the Southern Oxfordshire LEADER Scheme.

The group is made up from volunteers representing the following organisations; The Northmoor Trust, DAMASCUS Youth Project, Local Farmers, BTCV, National Farmers Union, Sustainable Wallingford, Sylva Foundation, South Oxfordshire District Council, Vale of the White Horse District Council, Berks Bucks & Oxon Food Group, 21st Century Thame, Business Link, Oxfordshire Rural Community Council, and Local Business Representatives.

- ◆ **Local Action Network**

- ◆ **Accountable Body** – South Oxfordshire District Council

# The Money!

- ◆ £1.89 Million from now until Dec 2013
- ◆ Grants available up to £50,000
- ◆ But typically £20-30k
- ◆ Grant rate(%) dependent on project but typically 50% of the cost of the project
- ◆ In kind – up to 20% of the project cost

# Projects Supported

- ◆ 19 grants made to date, to the value of £375,945
- ◆ On Farm Activities;  
Energy efficiency of new milking parlour, Dews Meadow Farm, Farmer Gow's, Lily's farm shop and cafe
- ◆ Wider Rural Economy;  
Children's Food Festival, Shotover Brewery Company, TRACTOR Project, Brightwell com Sotwell Community Shop, Oxford Bread Group/ Heritage Harvest, New Moorings Wallingford
- ◆ Rural Community Projects;  
'Tortoise in love' Community Film, Upton Village Hall, St John's Chapel Fernham, Jubilee Hall Lewknor, Uffington Village Hall

# How To Apply

- ◆ Fill in an Expression of Interest Form, available on website or from Kate Forrest
- ◆ Develop a full application - if advised that project is eligible
- ◆ Application is appraised
- ◆ Then discussed by LAG Decision Making Group
- ◆ Final endorsement from SEEDA
- ★ LEADER Project Manager on hand to help you develop your application.



Southern Oxfordshire LEADER

(01491) 823176

[www.southernoxfordshireleader.org.uk](http://www.southernoxfordshireleader.org.uk)